

PART OF THE S. 1/2 OF SECTION 29, AND N. 1/2 OF SECTION 32, T.7N., R.1W., S.L.B. & M. &
PART OF LOTS 14 & 40, PLAT "B" NORTH OGDEN SURVEY

NORTH OGDEN RANCHETTES - UNIT 1

TAXING UNIT: 10

IN NORTH OGDEN CITY

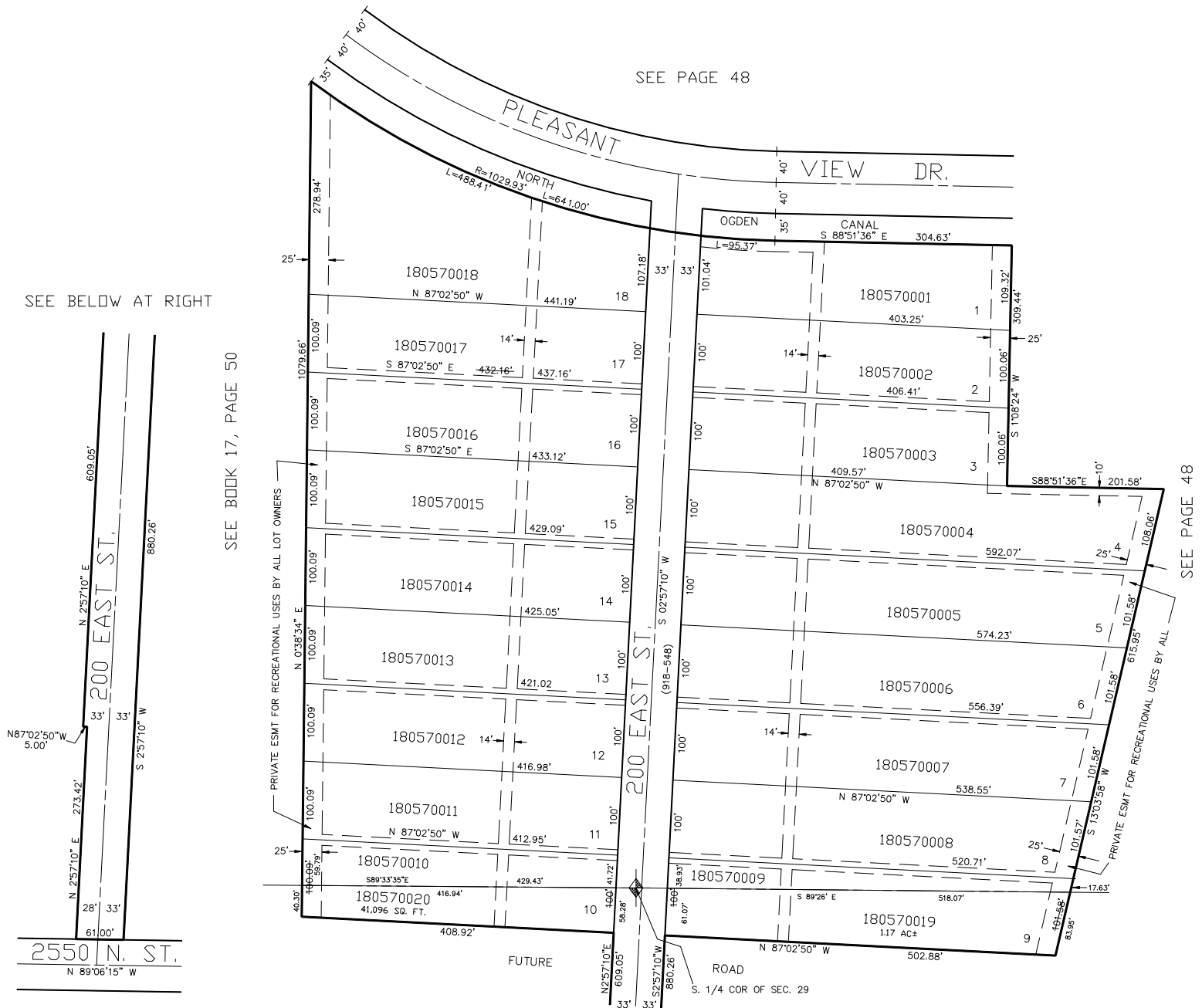
SCALE 1" = 100'

57

SEE PAGE 48

SEE BELOW AT RIGHT

SEE BOOK 17, PAGE 50



25' PRIVATE EASEMENT FOR RECREATIONAL
USE BY ALL LOT OWNERS

SEE ABOVE AT LEFT

7' UTILITY & DRAINAGE EASEMENTS EACH
SIDE OF PROPERTY LINES AS INDICATED
BY DASHED LINES EXCEPT AS OTHERWISE
SHOWN.